

MONTHLY MEMBERSHIP PROGRESS REPORT

LOCATION INDIA

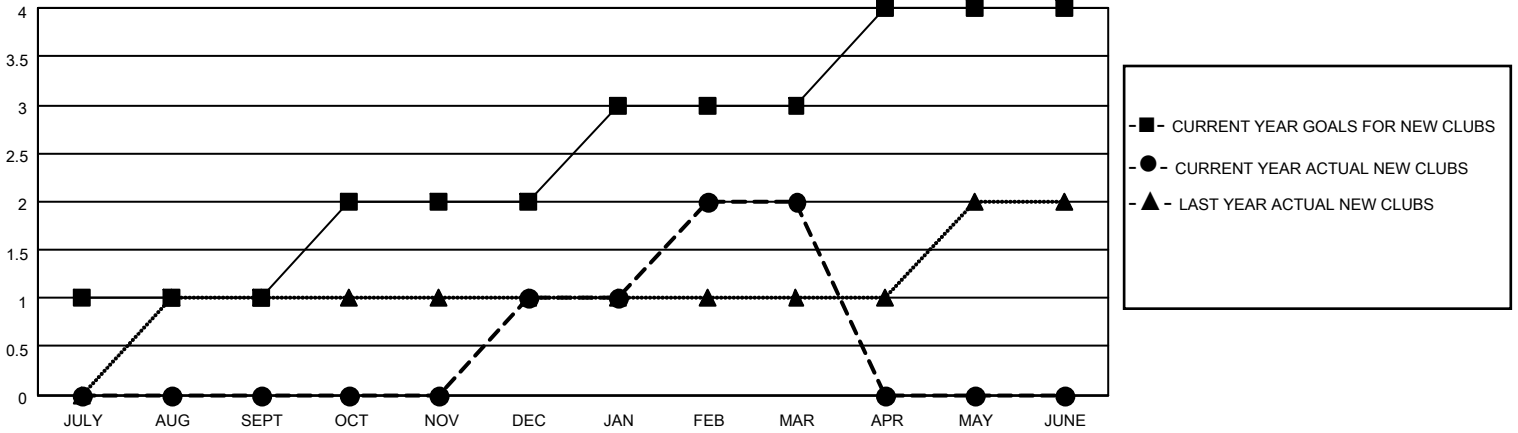
District 324A5

Results as of: 3/31/2021

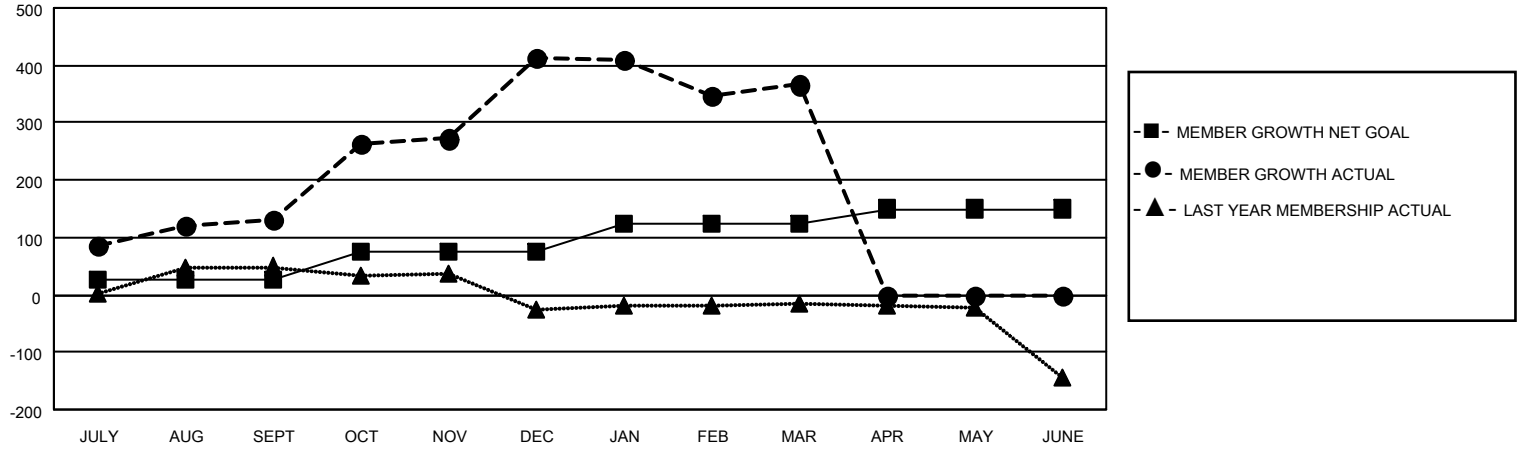
Clubs			
RESULTS FOR 2020-2021			
QUARTER	NEW CLUB GOAL	NEW CLUBS	DROPPED CLUBS
JULY/AUG/SEPT	1	0	0
OCT/NOV/DEC	1	1	0
JAN/FEB/MAR	1	1	3
APR/MAY/JUNE	1	0	0

Members			
RESULTS FOR 2020-2021			
QUARTER	MEMBER GROWTH NET GOAL	MEMBER GROWTH ACTUAL	DROPPED MEMBERS ACTUAL (including transfers)
JULY/AUG/SEPT	25	160	23
OCT/NOV/DEC	50	345	62
JAN/FEB/MAR	50	67	103
APR/MAY/JUNE	25	0	0

GOALS AND ACTUAL NEW CLUBS CUMULATIVE



GOALS AND ACTUAL MEMBERS CUMULATIVE



DROPPED CLUBS: 3

48 CLUBS OF 61 ADDED 1 OR MORE NEW MEMBERS

<u>GENDER DISTRIBUTION</u>	
MALE	1,680 (74.37%)
FEMALE	579 (25.63%)

<u>DROPPED MEMBERS</u>	
DECEASED	13
CLUB CANCELLED	77
OTHER	98
TOTAL	188

[CLICK HERE FOR CUMULATIVE MEMBERSHIP DATA](#)

TOTAL FAMILY UNIT MEMBERS	713
FAMILY MEMBERS PAYING HALF DUES	440